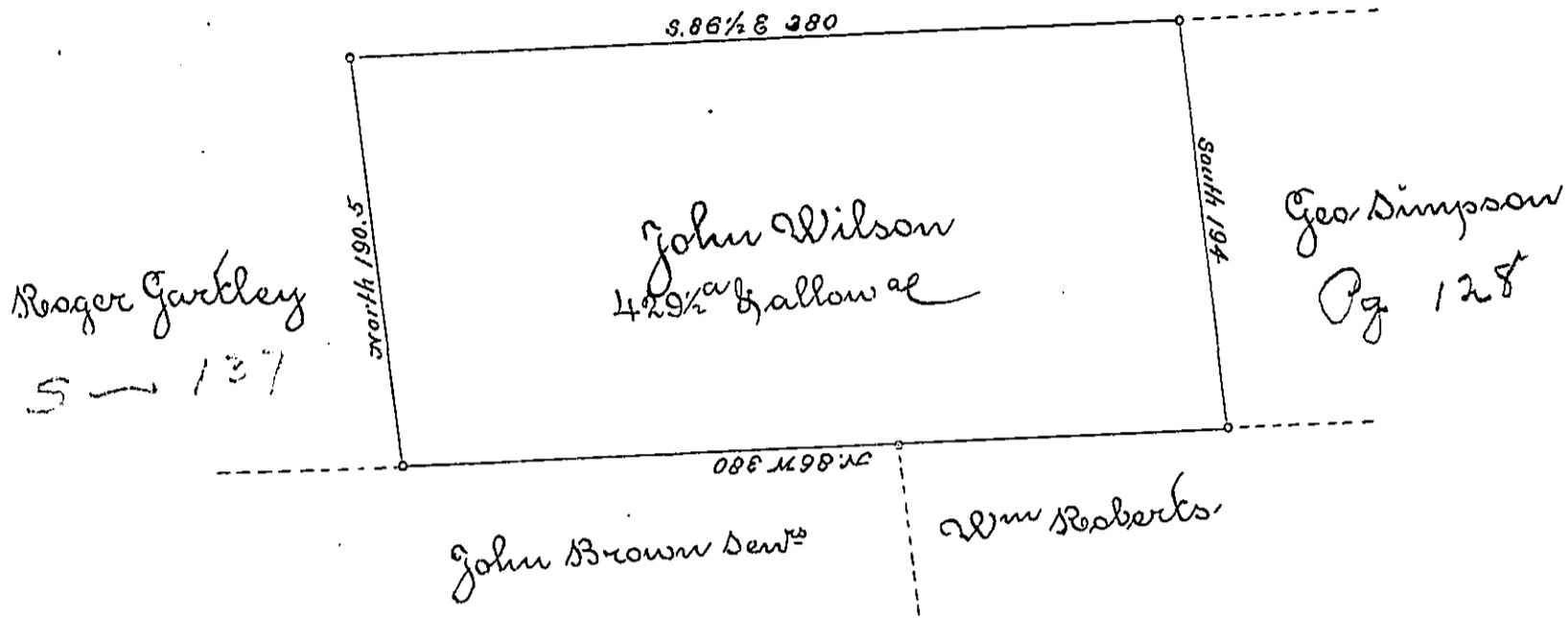


State of New York



A Draught of a tract of land Called Situate adjoining land of  
 George Simpson and others in Luzerne County Survey'd on the 14<sup>th</sup>  
 day of September 1787 for John Wilson by virtue of his Warrant da-  
 ted the 26<sup>th</sup> day of July 1787 Containing four Hundred and Twenty nine  
 Acres and a half and allow<sup>e</sup> of 670<sup>t</sup> for Roads be e

To John Lukens Esq }  
 Surveyor Genl }

by  
 Wm Gray D. S.

IN TESTIMONY that the above is a copy of the original remaining on file in the  
 Department of Internal Affairs of Pennsylvania, made con-  
 formably to an Act of Assembly approved the 16th day of  
 February, 1833. I have hereunto set my Hand and caused  
 the Seal of said Department to be affixed at Harrisburg, this  
 Fifth day of November 1895.

James W. Fatta  
 Secretary of Internal Affairs.